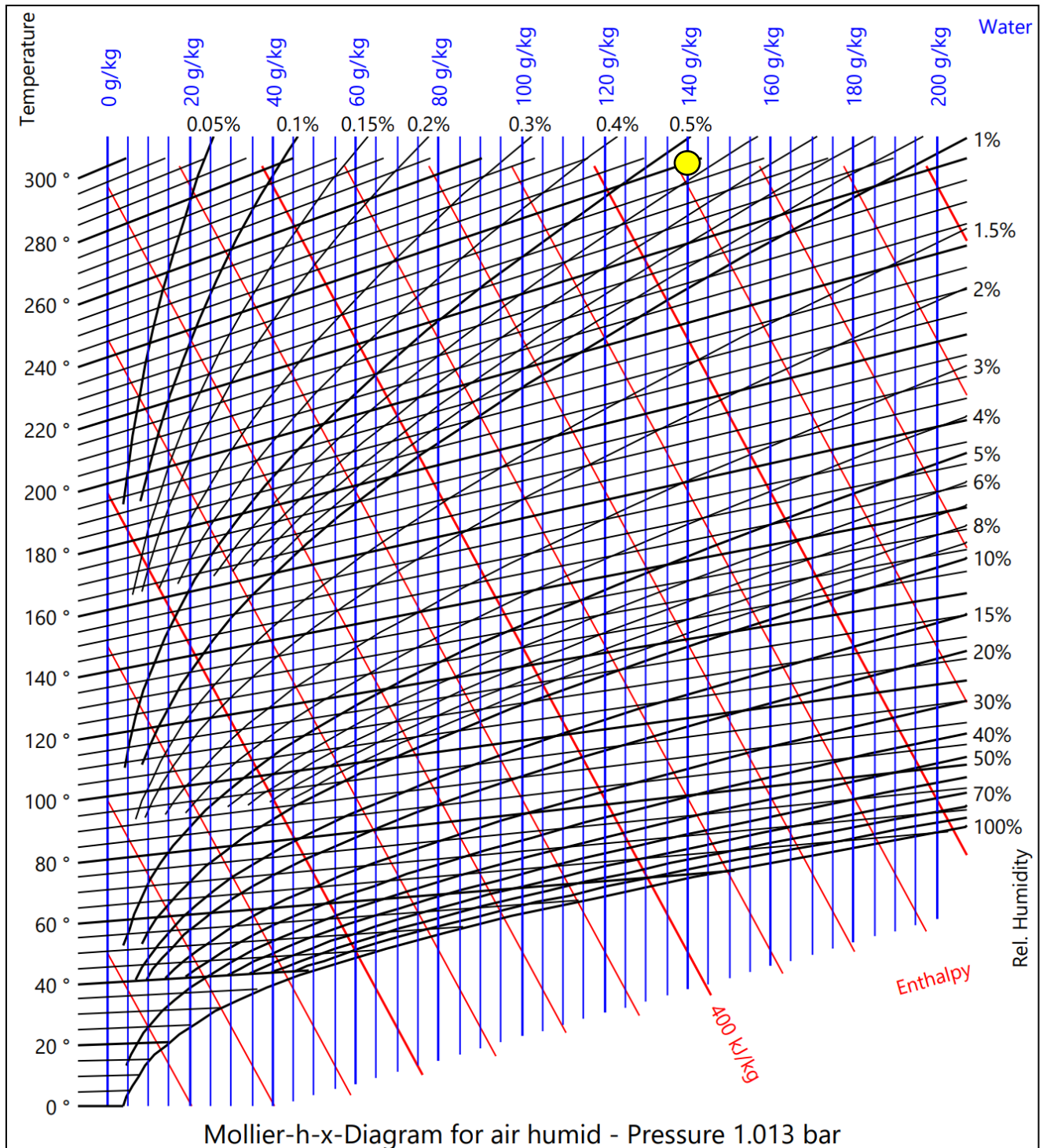




Mollier-HX-Chart

Status 2022: More than 6,000 engineers in heating, ventilation, refrigeration and air conditioning work with our **Mollier-HX-Chart, developed in high-level language**, in a temperature and humidity range where the temperature lines above 40°C only rise moderately and therefore are not perceived as disturbing. **The yellow dot shows 240 °C / 140 g/kg.**

Supported area
Pressure from 0.03 to 16 bar
Temperature from -100 to 300 °C
Humidity von 0 to 1,000 g/kg

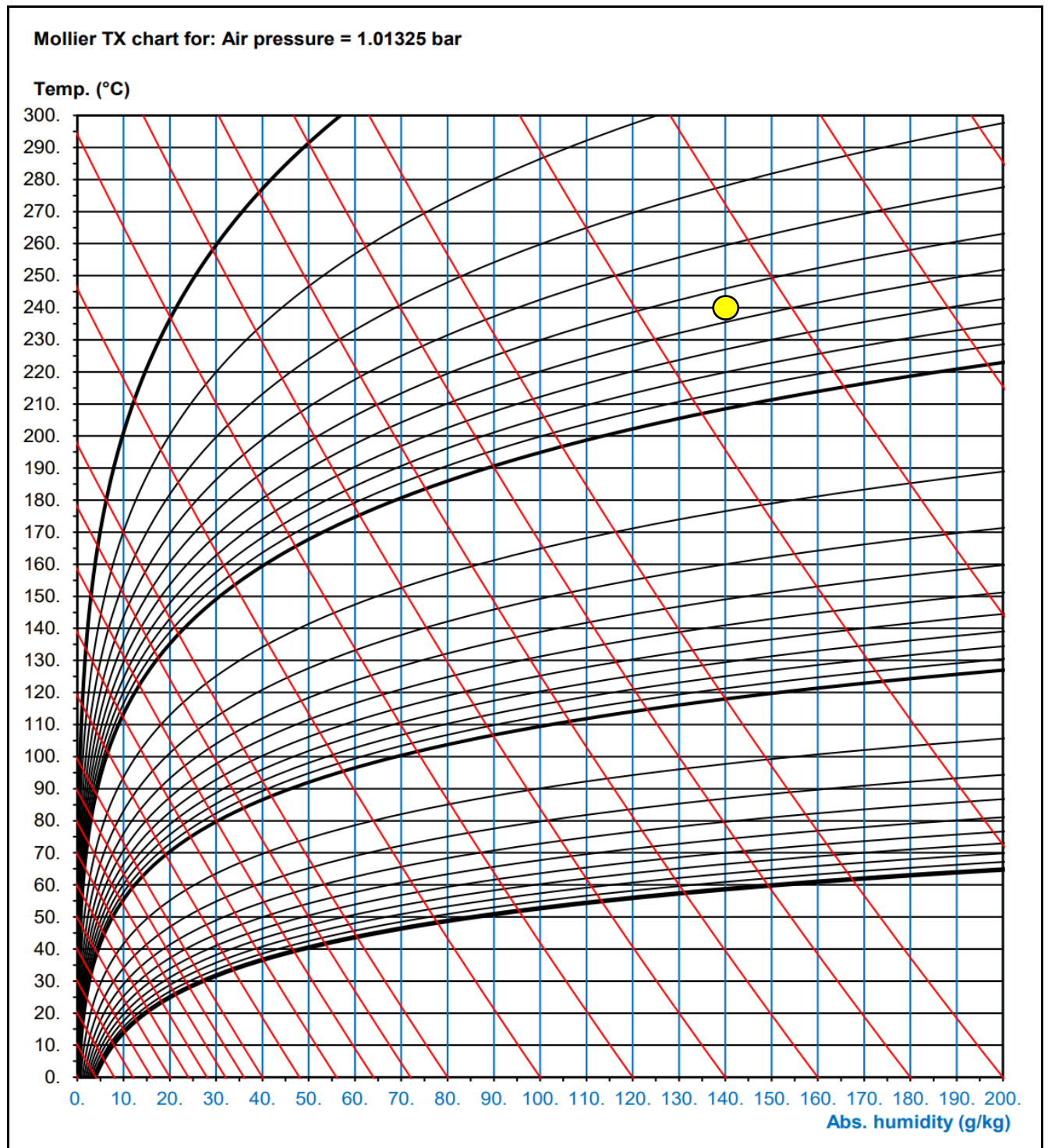




Mollier-TX-Chart

Status of 2022: Fewer than 60 process engineers, 100 times fewer engineers than in the HVACR industry, prefer our Mollier-TX- Chart, developed in Excel, in a temperature range where all temperature lines are horizontal. Instead, the enthalpy lines turn into curves, which you can hardly see. The support area is larger. **The yellow dot shows 240 °C / 140 g/kg.**

Supported area
Pressure from 0.03 to 16 bar
Temperature from -100 to 500 °C
Humidity from 0 to 3,000 g/kg






Mollier-HX-Chart

Mollier-TX-Chart

So we find that the majority of engineers prefer the more familiar Mollier-HX-Chart and other engineers rely on the Mollier-TX-Chart. The important thing is, that all engineers can buy one or the other, or even better, both versions from us.

No	Country		Number of licenses			
		AHH 10 apps included	HEH CCS	EAC DEH ESH	Diverse	Total
1	Germany	2399	328	125	41	2893
2	Switzerland	1271	200	52	18	1541
3	Italy	665	84	2	27	778
4	Netherlands	563	66	7	3	639
5	Various countries	388	191	17	8	604
6	Austria	355	13	13	3	384
7	France	353	0	3	0	356
8	Denmark	128	34	2	4	168
9	United Kingdom	24	67	6	7	104
10	Turkey	7	78	10	9	104
Total	Total	6153	1061	237	120	7571

